

CondeHouse Products are Made of Natural Wood

The ability to know which part of which tree to use for each piece of furniture and in which way is a testament to the appreciation for wood that has naturally grown within our craftspeople.

Please enjoy the unique character of natural wood for a long time.



01. Characteristics of Wood

Each tree has a different appearance, habits, and characteristics depending on the climate and environment in which it grew. The natural features of the wood are called natural marks, which are 【The Proof of Its Authenticity】 as a natural material.



■ Knots

Knots are connected to the main trunk. They come in various sizes, both large and small. Knots with holes are reinforced with resin.



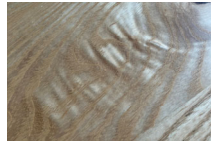
■ Leaf Nodes

Dormant buds (like winter buds) immature buds enclosed within coverings, marked by very fine nodes. They are typically characterized by being locally clustered together.



■ Tiger Stripes

A characteristic of oak wood, tiger stripes (Tora-fu) are a pattern that resembles a tiger's stripes.



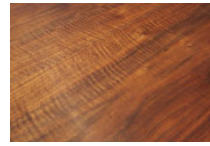
■ Ribbon Figure

A wood grain pattern where the wood fibers intertwine in a complex manner, creating a glittering, shimmering appearance due to light reflection.



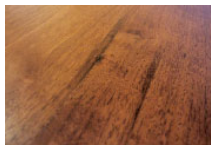
■ Wood Grain Instability/Cracks (Solid Wood Tables)

In some cases, these areas may be filled with resin (putty). The ribbon-like part shown in the image is used in the "Ippongi" series.



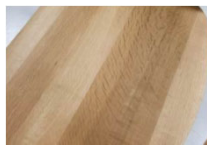
■ Wrinkled Grain

The wood grain appears to have shrunk and wrinkled, creating a crimped or crinkled pattern.



■ Streaks

These are dark, stain-like marks that appear on the wood's surface from scratches it sustained during its growth.



■ Color Variation

There is a difference in color between the heartwood (the center of the tree) and the sapwood (the outer part).



■ White Sapwood

The white portion of a tree near the outer bark is called white sapwood.

02. About the Craftsmanship

At CondeHouse, solid wood and veneer are used selectively to suit each design.



Solid wood table

Solid natural wood used as is. Each piece has a unique character to enjoy.

Finishes

- Oil finish
- Urethane finish (Colored options available in urethane finish only)



Veneer

Natural wood sliced into thin sheets, achieving both stability and aesthetic appeal.

Finish

- Urethane finish

With urethane finish, the surface texture of the tabletop varies depending on the wood species and paint color.

● Wood grain is not uniform

Within a single tree, only a small portion has the nearly straight grain known as "true quarter-sawn" (hon-masame). Where branches were attached, the grain forms a pulled or distorted pattern. The spots where branches were removed remain as knots. At CONDE HOUSE, these characteristics are embraced as individuality, finishing each piece into beautiful furniture with a natural expression.

● Color varies slightly too

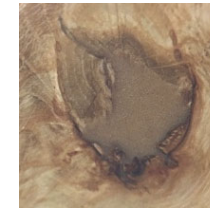
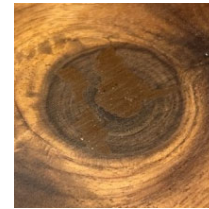
Even within the same wood species, color differs from tree to tree — and even within a single tree, the outer and inner portions, and the upper and lower sections, all vary. When purchasing four chairs of the same species and finish, we can match the colors to look harmonious, but an exact identical color match is not possible.

● Affected by the environment

Direct sunlight and heating can cause localized sun bleaching or drying that leads to splintering. Solid wood continues to "breathe" even after being made into furniture, changing with its environment. In the case of solid wood tables, warping or cracking may occasionally occur.

03. Wood Processing Methods

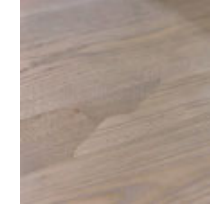
Resin filling of knots



Knots formed from dead branches undergo significant expansion and contraction during drying, and may fall out from the center. At CONDE HOUSE, this area is filled with resin and leveled flat.

Knot size and shape vary between individual pieces of wood. Wood expands and contracts with changes in humidity and temperature, but the resin used for knot filling is unaffected by environmental conditions. As a result, the resin may appear to rise above or sink below the surrounding wood surface as the wood moves. The color of the resin may appear to vary depending on the knot.

Vertical Joints-Utilizing Short but Rich Material



Due to the increased demand for wood both in Japan and internationally, it's becoming more difficult to secure good quality materials of sufficient length. At CondeHouse, we have started a new initiative to effectively use our limited resources. We now connect high-quality, shorter pieces of solid wood end-to-end to create a full tabletop.

This method is used for solid wood tabletops with W2101 or larger (Some Exclusions Apply). The joints are designed to be inconspicuous while also ensuring strength and adapting to expansion and contraction. Our skilled craftspeople randomly place the joints within the tabletop, carefully balancing the material's character with its visual appeal.

Furniture Care and Maintenance

- Avoid placing in direct sunlight. Prolonged exposure to direct sunlight may cause natural wood, fabric, and leather to fade or discolor.
- Do not place near air conditioning or heating vents. Sudden changes in dryness or humidity may cause the wood to crack, warp, or deform.
- Be sure to read the "Furniture Usage Precautions" in the User's Guide included with the product.

Maintenance

● Urethane Finish

Daily care

- Gently wipe with a soft, dry cloth. Rubbing too hard can cause dust and dirt to get into the wood grain, leading to stains

What to do when the product gets soiled

- If a stain occurs, wipe it with a cloth soaked in water and wrung out tightly, then follow with a dry cloth

● Oil Finish

Daily care

- Gently wipe with a soft, dry cloth.

Oil finish products require maintenance with oil every 6 months. (At least 1 per Year)

Important Notes for Solid Wood with an Oil Finish

While oil finishing allows you to enjoy the natural texture of the wood, it is a delicate finish that is vulnerable to moisture, heat, and scratches. Placing a glass with condensation or a hot object on the surface may cause stains.

- The wood may move or crack due to changes in humidity and temperature.
- Avoid placing the furniture in direct sunlight.
- We recommend using a humidifier to prevent the wood from becoming too dry.

Instruction for Oil Maintenance



Bivos Oil Wax Kit
4,000 JPY
Available . Contact us



All Conde House leather is natural leather

Natural leather offers a sense of volume, texture, and character that synthetic leather cannot replicate. Depending on how it's used, you can enjoy various changes in its texture and feel



01. Natural Marks

Natural marks on leather are scratches from when the cow was alive, such as from thorns or insect bites. They can also include uneven dyeing, wrinkles, and variations in softness between individual hides. These marks are evidence that the leather is authentic, just as people have wrinkles and scars.



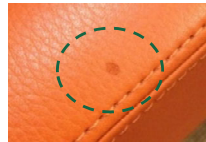
■ Wrinkles

These are wrinkles that formed while the animal was alive. When stretched flat, they remain as patterns.

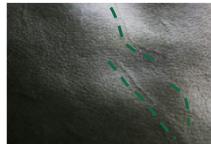


■ Uneven Dyeing

When the leather is dyed, differences in color can occur depending on the quality and surface condition of the hide.

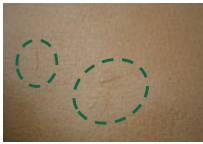


■ Insect Bites



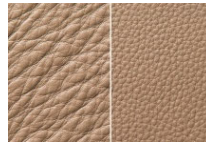
■ Blood Veins

These are marks left by blood vessels that were just under the skin. They are often seen on leather with a natural, unfinished look.



■ Scars

Scratches or injury marks can be seen on the surface.



■ Grain

Variation in leather quality

Differences in grain texture and leather quality depending on the part of the hide and the individual animal.

02. Maintenance

Daily Care

- Gently wipe with a soft, dry cloth. Do not use a wet cloth or chemical dusters that contain oil, as this can cause stains and discoloration.
- Regularly vacuum the leather with a soft brush attachment to remove dust and dirt
- Maintenance methods vary depending on the type of leather.



KP/MR/MG/RK/EN (Pigment-Finished Leather)

What to do when the leather gets soiled

- Wipe the stain with a soft cloth dipped in lukewarm water and wrung out tightly. Then, gently wipe away any remaining moisture with a dry, soft cloth.
- For stubborn stains, use our recommended leather cleaner.

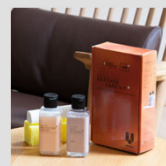


Pigment-specific Leather Cleaner
3,300 JPY Available.
Contact us.

BQ (Semi-Aniline Leather)/GR (Aniline Leather) * *Finish without protective topcoat

What to do when the leather gets soiled

- Since there's no topcoat, wiping with water can cause stains and remove natural oils. A dry wipe is strongly recommended for primary care.
 - If wet wipe is necessary, use one that is wrung out very tightly to avoid leaving wipe marks.
- Then, gently wipe away any moisture with a dry cloth.
- After drying, we recommend using our recommended leather care kit to prevent the surface from cracking.



Leather Care Kit Plus for Semi-Aniline & Aniline Leather

150ml: 5,200 JPY
100ml: 3,800 JPY
Available. Contact us.

About Aquaclean



Aquaclean is a fabric treatment technology that allows stains to be removed with water alone. An invisible molecular coating prevents stains from penetrating the fibers.

Adding water causes stains to lift to the surface, allowing them to be easily wiped away.



Dampen the soiled area with water and gently wipe in a circular motion with a cloth.

It is recommended to spray water on with a spray bottle, or dampen with a wet cloth and wait a few seconds.

Scrubbing too hard may damage the fabric.

For solid debris and other stains that can be removed beforehand, remove as much as possible without spreading the stain, then clean with water.

For stubborn stains, applying a small amount of neutral soap or mild detergent before wiping is effective.

Stains may not come out in one attempt. Repeat the process several times as needed.

Oil-based stains may be difficult to remove.

The fabric is not suitable for full immersion washing.

Clean only the soiled area by dampening it with water.

"Camellia" and "Aston" are compatible with dry cleaning. For removable cover types only.

(Please note that repeated dry cleaning will diminish the effectiveness of the Aquaclean treatment.)

- Aston
- Camellia

About Pearltone

Upon request, a Pearltone treatment can be applied to the fabric. Fabric treated with Pearltone has different care requirements than untreated fabric in order to maintain its water-repellent and stain-resistant properties.

※ This is an optional treatment. Please ask a staff member for pricing and lead times.

Some upholstery materials are not compatible with this treatment.

Before Treatment After Treatment



Care Instructions

Blot the stain with a dry towel without rubbing. Then apply water to the remaining stain to lift it, and blot again with a dry towel. Allow to dry thoroughly before use.

Early detection and prompt action are key. Leaving stains untreated can cause them to set over time and may result in fabric discoloration.

Care Precautions

- Washing and dry cleaning are not permitted, as they will diminish the water-repellent effect of the Pearltone treatment.
- Do not use neutral detergents, deodorizing sprays, or alcohol-based disinfectants, as these will reduce the water-repellent effect.
- The water-repellent and stain-resistant properties are not effective against blood, hair dye, emulsified high-temperature liquids, or high-temperature oil-based liquids.
- For liquids containing fruit juice such as red wine or orange juice, the treatment provides initial protection, but leaving them untreated may cause the pigment to set and stain the fabric permanently. Please take care.

Pearltonetreatment is not compatible with Aquaclean upholstery.

"Jan" is excluded from Pearltonetreatment as it already features a water-repellent fabric.

Pearltonetm is a registered trademark of Pearltonetm Co., Ltd.