

(Super Water Repellent/Stain Resistant Finish)

Pearl Tone Processing

Pearl Tone is a registered trademark of PearlTone Co., Ltd.

It was originally developed as a water-repellent finish for high-grade Japanese traditional clothing, Kimono. The technology was researched to protect valuable Kimono from rain and stains. This high-quality technology has been applied to furniture fabric. It allows for the application of stain-resistant and easy-to-remove stain properties without changing the fabric's texture. The processing uses fluorine, which is also found in toothpaste, making it harmless to the human body and safe to use.



Point

Perform Maintenance as Soon as Possible

Even with Pearl Tone processing, it is crucial to clean stains quickly. Liquids containing fruit juice, such as red wine and orange juice, as well as tea and coffee, can be used as dyes. If those moisture soak in and are left for a long time, the color stains will become impossible to remove.



Coffee stain left for 2 to 3 hours.

Point

Neutral Detergents and Deodorizing Sprays Cannot be Used

Surfactants diminish the effect of Pearl Tone processing. Many commercially available neutral detergents and deodorizing sprays contain surfactants and therefore cannot be used. (Those without surfactants can be used) .

Point

Effective against Warm Liquids

It is effective against warm liquids, such as hot coffee, compared to general water-repellent treatments. However, it does not have water-repellent or anti-fouling effects against blood, hair dye, emulsified high-temperature liquids, or high-temperature oily liquids.

Point

Avoid Washing and Dry Cleaning

If the furniture has a removable cover, please note that washing it with water or dry cleaning will diminish the water-repellent effect of the Pearl Tone processing.

Point

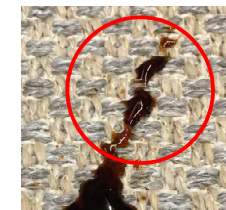
If the Durability or Effect has Decreased

There is no specific durability period for the Pearl Tone processing effect, as it varies depending on usage and installation environment. Areas that are frequently touched tend to show a quicker decrease in the effect due to fabric friction. Surface dirt such as oil/grease and dust could also decrease the effect. Wringing a towel soaked in water firmly and using it to remove dirt and dust on the fabric can slightly restore the effect.

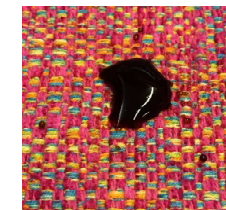
Point

The Effect Varies Depending on the Fabric

Pearl Tone processing can be applied to most fabrics, but the effect differs depending on the texture of the fabric. In the case of roughly textured fabrics with large unevenness, dirt that falls into the large indentations breaks down into finer particles. Fine dirt particles can easily enter through the gaps in the weave, and dirt that gets deep into the fibers becomes difficult to remove, so caution is needed.



Dirt on coarsely textured fabric



Dirt on finely textured fabric

(Super Water Repellent/Stain Resistant Finish)

Pearl Tone Processing Maintenance Method

The maintenance method varies depending on whether the stain is water-based or oil-based. If a stain occurs, perform maintenance following the procedure below. In both cases, it is important to clean the stain as soon as possible.

Caution: Do not wipe strongly or rub with a wet towel. This may cause moisture or dirt to penetrate into the fibers.

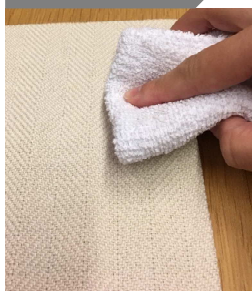


Maintenance Method for Water-Based Stains

Since Pearl Tone processing prevents moisture from penetrating the cloth, spills can be wiped away quickly. Even when color stains like tea or coffee remain, cleaning is simple.



STEP 1



Use a dry towel to absorb the stain without rubbing, and soak up the major dirt with the towel.

STEP 2



Pour a little water on the remaining stain to lift the dirt.

STEP 3



Use a towel or tissue paper again to absorb the lifted dirt.

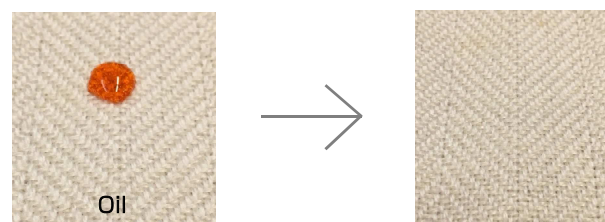
STEP 4

Let it air-dry completely.

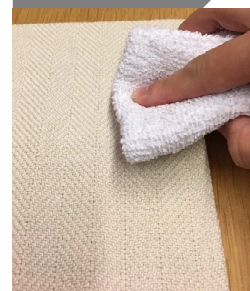
Maintenance Method for Oil-Based Stains

If fried food or dressing spills, oil stains may remain even if you think you have wiped them completely. Pearl Tone processing makes such cleaning easy.

Note: For oil-based stains, use volatile oil (benzine) available at pharmacies.



STEP 1



Soak a dry towel thoroughly with benzine and press it onto the stain for a while to dissolve the dirt.

STEP 2



Soak another towel with benzine and wipe to blend the area.

STEP 3



If dirt remains, repeat the treatment in steps 1 and 2.

STEP 4

Let it air-dry completely.